

Create a Contacts System Project in Netbeans and Oracle using Maven

Download and Install Oracle 21c Express Edition from Oracle Website.

You can find the link through google

During the installation of Oracle 21c Express Edition the setup will prompt you for password for SYSTEM or SYS or PDBA Account. Remember the password or note it down somewhere this password is required to connect to Oracle Database.

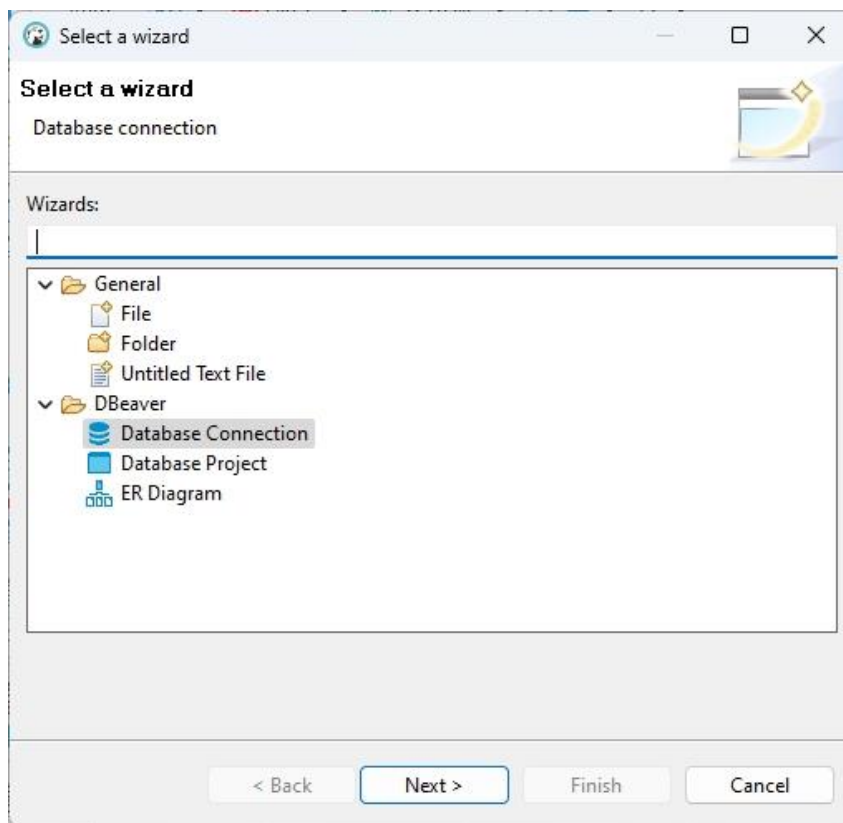
I have taken this password as "abcdef"

To create table contacts I have used Dbeaver to connect to Oracle Database.

Following are the steps to connect to Oracle Database using Dbeaver.

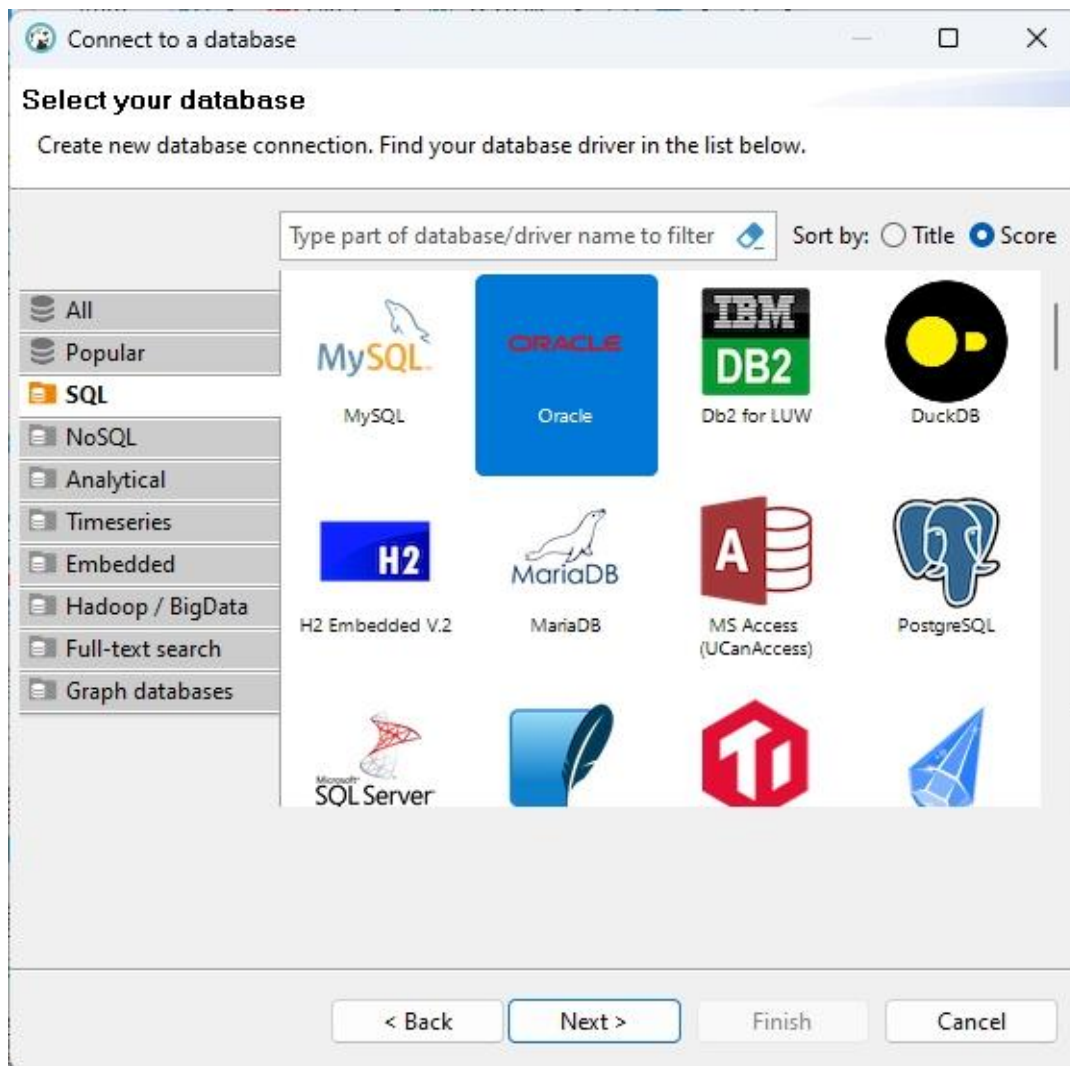
Go to File -> New

Following window will appear



Select Database Connection and Click Next

Following window will appear



Select Oracle and click Next

Following window will appear

Connect to a database

Oracle Connection Settings

Oracle connection settings

ORACLE

Main | Oracle properties | Driver properties | SSH | Proxy

Connection Type:

Basic | TNS | Custom

Host: localhost Port: 1521

Database: xe SID

Authentication

Authentication: Oracle Database Native

Username: system Role: Normal

Password: Save password locally ☒

Client: OraDB21Home1

[You can use variables in connection parameters.](#) Connection details (name, type, ...)

Driver name: Oracle Driver Settings

< Back Next > Finish Cancel

Click Finish and You will the following connection on the left side

>  ORCL 3 - localhost:1521

Right Click on the above option and Click Connect

You will be connected to databasewith SID as xe

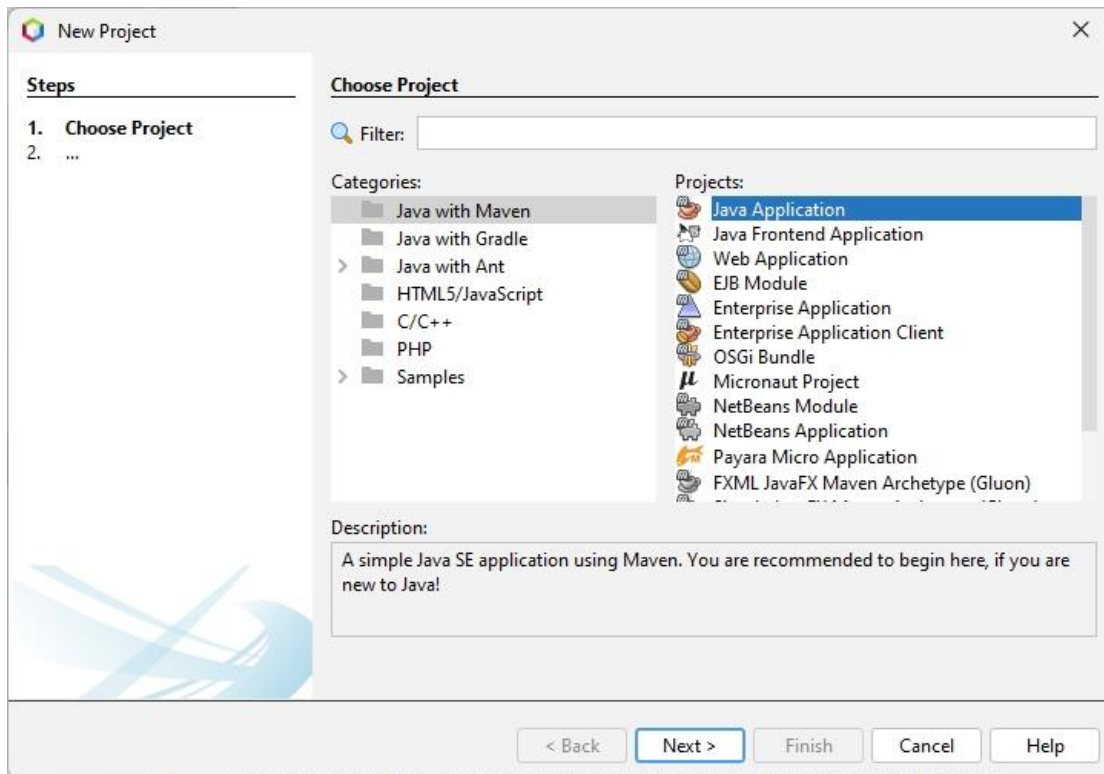
Now open SQL Editor and create table contacts by writing the following query

```
create table contacts(cname varchar2(20),caddress varchar2(20),cmobileno varchar2(20),cemail
varchar2(20));
```

Now Start Netbeans

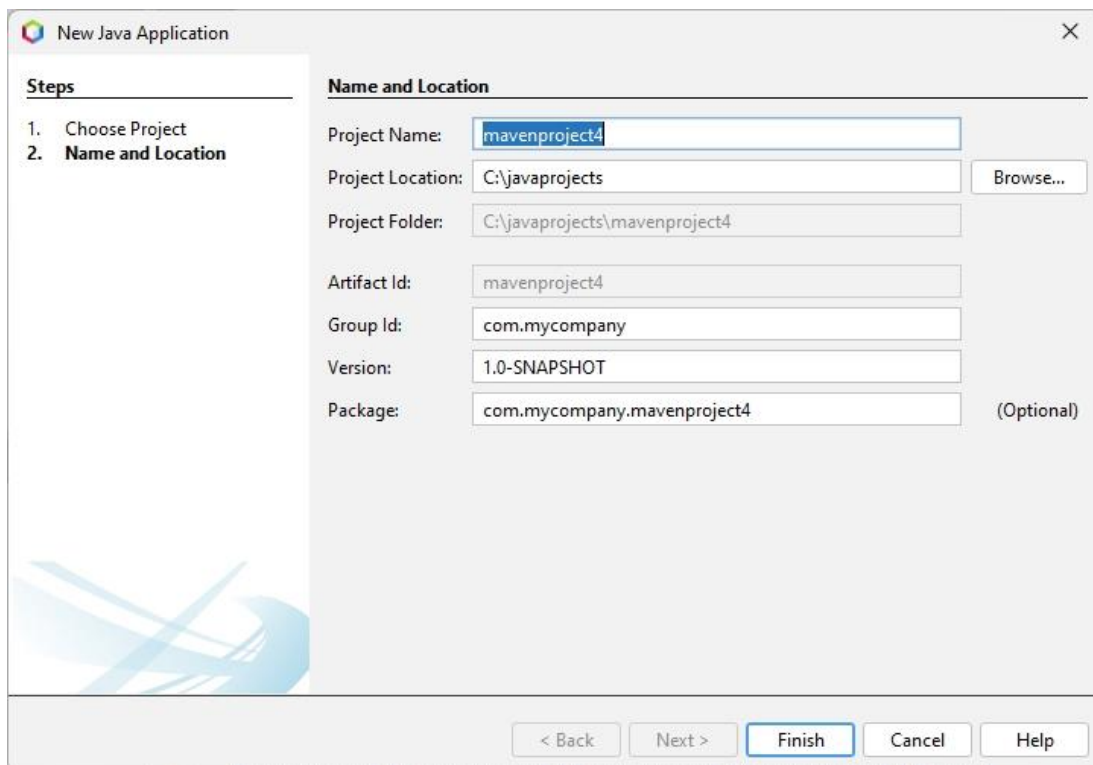
Go to File -> New Project

Create a Maven Project by using the following window



Click Next

Following window will appear



Click Finish

Now Go to Project Files -> pom.xml and add the following dependencies to pom.xml

```
<dependencies>

    <dependency>

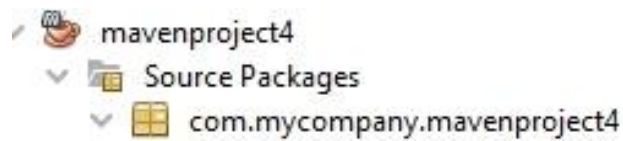
        <groupId>com.oracle.database.jdbc</groupId>

        <artifactId>ojdbc8</artifactId>

        <version>23.2.0.0</version>

    </dependency>

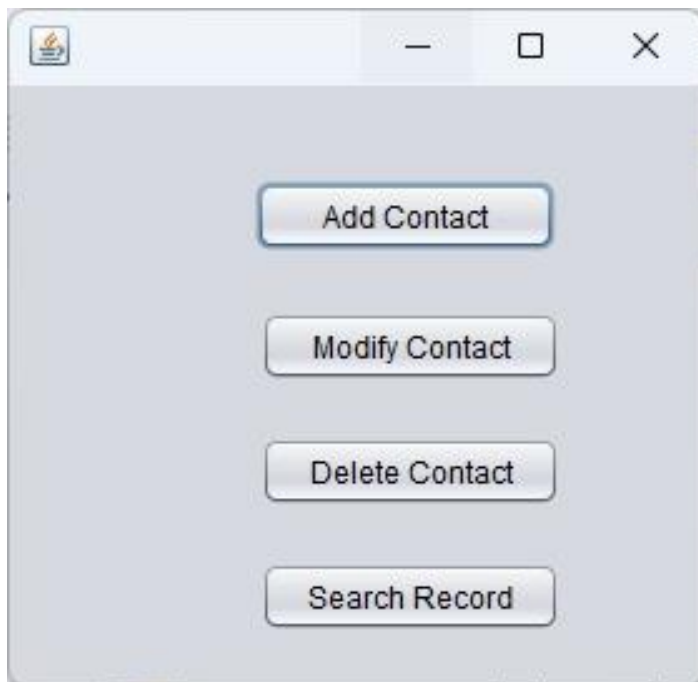
</dependencies>
```



Now Right Click on com.mycompany.mavenproject4 and add a New JFrame Form

Before placing the controls on the frame or form set Layout of JFrame as BorderLayout by right click on the frame and select Set Layout as BorderLayout and do this for all the forms.

Place the Following Controls on the form as shown below



Code for Add Contact Button

```
NewJFrame1 a=new NewJFrame1();

a.setSize(800,800);

a.setVisible(true);
```

Code for Modify Contact Button

```
NewJFrame2 a=new NewJFrame2();  
a.setSize(800,800);  
a.setVisible(true);
```

Code for Delete Button

```
NewJFrame3 a=new NewJFrame3();  
a.setSize(800,800);  
a.setVisible(true);
```

Code for Search Button

```
NewJFrame3 a=new NewJFrame3();  
a.setSize(800,800);  
a.setVisible(true);
```

Now Add a New JFrame with name as NewJFrame1 and place the following controls on it.



Code for Add Contact Button

```
try{  
    String cname=jTextField1.getText();  
    String caddress=jTextField2.getText();  
    String cmobileno=jTextField3.getText();  
    String cemail=jTextField4.getText();  
    //step1 load the driver class  
    Class.forName("oracle.jdbc.driver.OracleDriver");
```

//step2 create the connection object

Connection

con=DriverManager.getConnection("jdbc:oracle:thin:@localhost:1521:xe","system","abcdef");

Statement stmt;

int rs;

stmt = con.createStatement();

rs = stmt.executeUpdate("insert into contacts values('" + cname + "','" + caddress + "','" + cmobileneno + "','" + cemail + "')");

if(rs>0)

{

JOptionPane.showMessageDialog(this,"Contact Record Inserted");

}

else

{

JOptionPane.showMessageDialog(this,"Contact Record Can't be Inserted");

}

}

catch(Exception e)

{

JOptionPane.showMessageDialog(this,e.toString());

}

Now add a new JFrame with name as NewJFrame2 and place the following controls on it

Contact Name :

Contact Address :

Contact Mobile No :

Contact Email :

Code for Modify Contact Button

```

try{
    String cname=jTextField1.getText();
    String caddress=jTextField2.getText();
    String cmobileno=jTextField3.getText();
    String cemail=jTextField4.getText();
    //step1 load the driver class
    Class.forName("oracle.jdbc.driver.OracleDriver");

    //step2 create the connection object
    Connection
con=DriverManager.getConnection("jdbc:oracle:thin:@localhost:1521:xe","system","abcdef");
    Statement stmt;
    int rs;
    stmt = con.createStatement();

        rs = stmt.executeUpdate("update contacts set caddress='"+ caddress +
        "','cmobileno='"+cmobileno + "','ceail='"+ceail + "' where cname='"+cname + "'");
        if(rs>0)
        {
            JOptionPane.showMessageDialog(this,"Contact Record Updated");
        }
    }

```

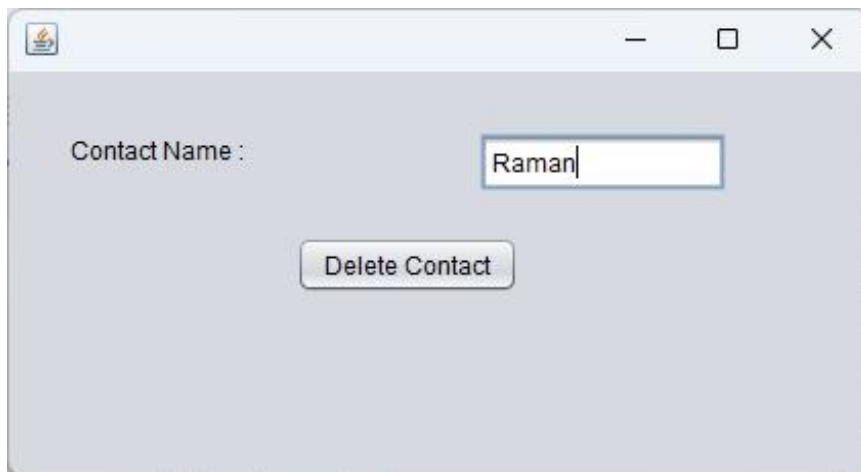


```

else
{
    JOptionPane.showMessageDialog(this,"Contact Record Can't be Updated");
}
}
catch(Exception e)
{
    JOptionPane.showMessageDialog(this,e.toString());
}

```

Add a JFrame with name as NewJFrame3 and place the following controls on it



Code for Delete Button

```

try{
    String cname=jTextField1.getText();
    //step1 load the driver class
    Class.forName("oracle.jdbc.driver.OracleDriver");

    //step2 create the connection object
    Connection
con=DriverManager.getConnection("jdbc:oracle:thin:@localhost:1521:xe","system","abcdef");
    Statement stmt;
    int rs;
    stmt = con.createStatement();

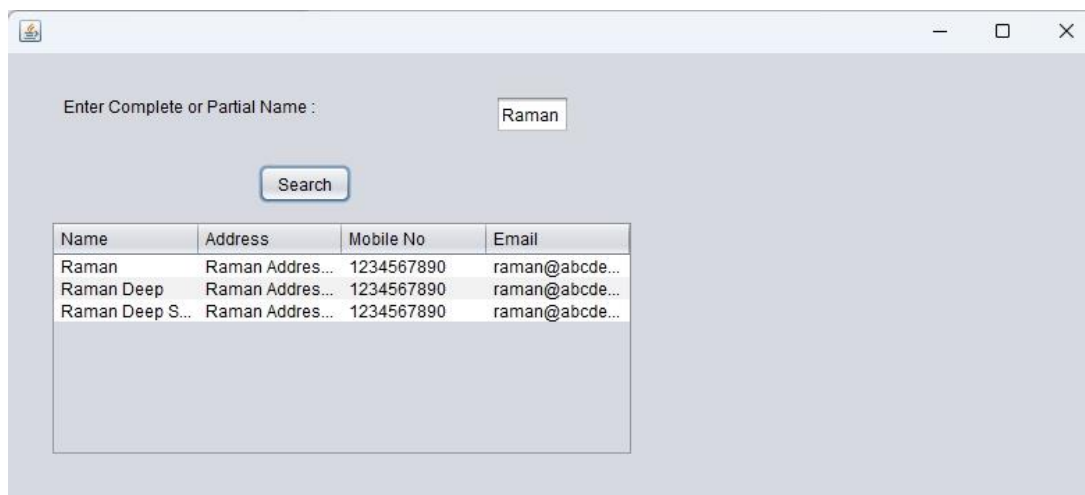
```

```

rs = stmt.executeUpdate("delete from contacts where cname='"+cname +
""");
    if(rs>0)
    {
        JOptionPane.showMessageDialog(this,"Contact Record Deleted");
    }
    else
    {
        JOptionPane.showMessageDialog(this,"Contact Record Can't be Deleted");
    }
}
catch(Exception e)
{
    JOptionPane.showMessageDialog(this,e.toString());
}

```

Now add a JFrame with name NewJFrame4 and place the controls on it as shown below



Code for Search Button

```

try
{
    DefaultTableModel model = new DefaultTableModel();
    String[] columnNames = {"Name", "Address", "Mobile No", "Email"};
    model.setColumnIdentifiers(columnNames);
    jTable1.setModel(model);
}

```

```
String cname=jTextField1.getText();  
Statement stmt;  
ResultSet rs;  
Class.forName("oracle.jdbc.driver.OracleDriver");
```

```
    Connection  
con=DriverManager.getConnection("jdbc:oracle:thin:@localhost:1521:xe","system","abcdef");  
stmt = con.createStatement();  
rs = stmt.executeQuery("SELECT * from contacts where cname like '%" + cname + "%'");
```

```
String contactname;  
String caddress;  
String cmobileno;  
String cemail;
```

```
while(rs.next()){  
    contactname=rs.getString("cname");  
    caddress=rs.getString("caddress");  
    cmobileno=rs.getString("cmobileno");  
    cemail=rs.getString("ceemail");  
    model.addRow(new Object[]{contactname,caddress,cmobileno,ceemail});  
}  
}  
catch(Exception e)  
{  
    System.out.println(e.toString());  
}
```
