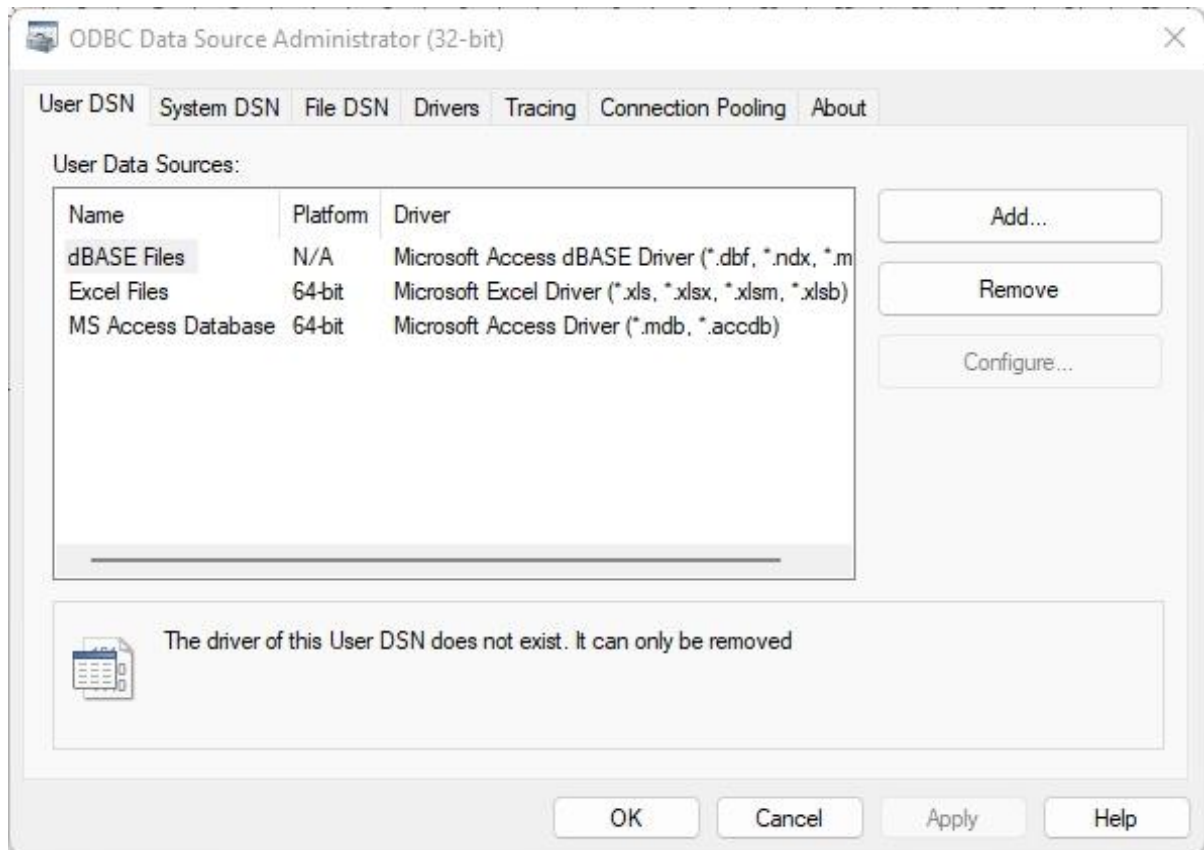


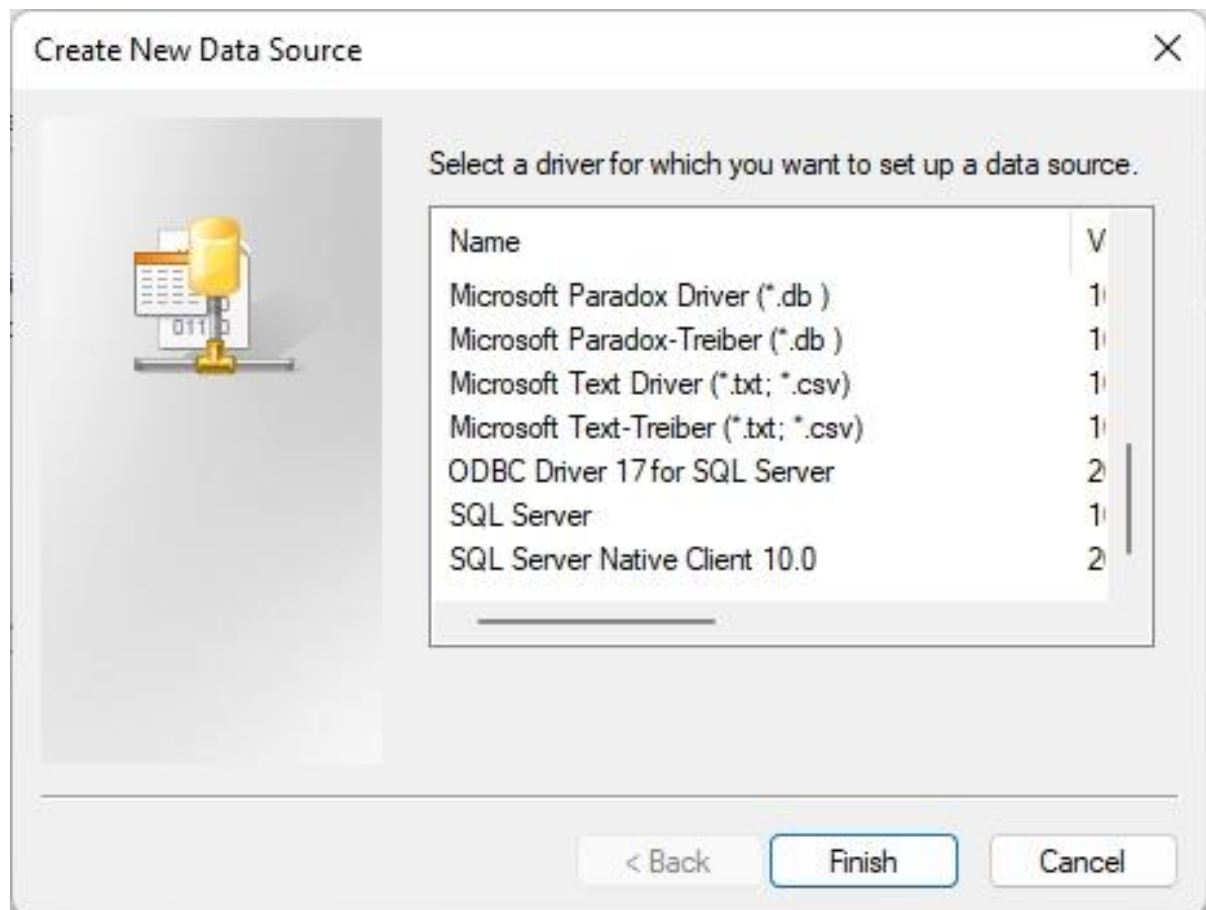
How to create DSN to SQL Server

In the search Box type dsn

Then select option ODBC Data Sources 32 Bit




Now Click on Add



Select SQL Server

And click Finish

Create a New Data Source to SQL Server



This wizard will help you create an ODBC data source that you can use to connect to SQL Server.

What name do you want to use to refer to the data source?

Name:

How do you want to describe the data source?


Description:

Which SQL Server do you want to connect to?

Server:

Now Click Next

Create a New Data Source to SQL Server



How should SQL Server verify the authenticity of the login ID?

☒ With Windows NT authentication using the network login ID.

☐ With SQL Server authentication using a login ID and password entered by the user.

To change the network library used to communicate with SQL Server, click Client Configuration.

☒ Connect to SQL Server to obtain default settings for the additional configuration options.

Login ID:

Password:

Now Click Finish and DSN is done